





## 5 High Acre Drive

£279,950

 3  1  1



A fabulous 3 bedroom semi detached house, tucked away at the start of this popular cul de sac on the western side of Ivybridge. The house is immaculately kept and presented, offering an entrance hall, living room and kitchen/diner on the ground floor, together with landing, 3 bedrooms and bathroom/WC on the upper floor. There is a southerly facing level rear garden and garage. The house is Upvc double glazed, gas centrally heated and has oak internal doors. highly recommended. EPC C 73.



# MILLINGTON TUNNICLIFF

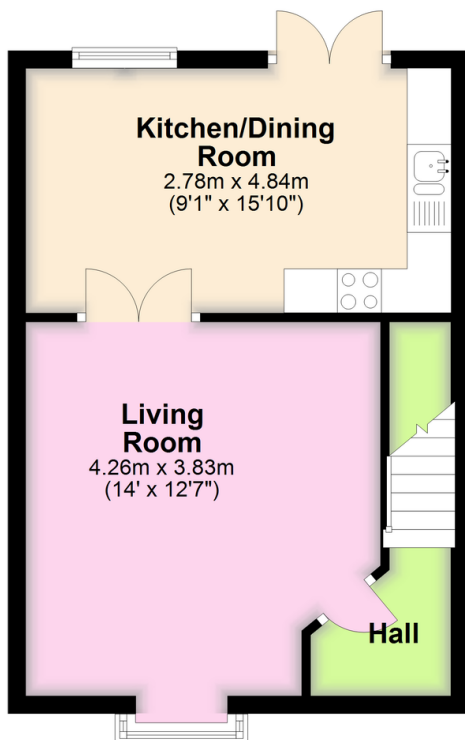
[www.millingtontunncliff.co.uk](http://www.millingtontunncliff.co.uk)

## Key Features

- 3 Bedroom Semi Detached House
- Southerly Facing Rear Garden
- Oak Internal Doors
- Modern Bathroom
- Close To Local Amenities
- Tucked Away In This Popular Cul De Sac
- Gas Central Heating
- Single Garage
- Upvc Double Glazing
- EPC C 73.

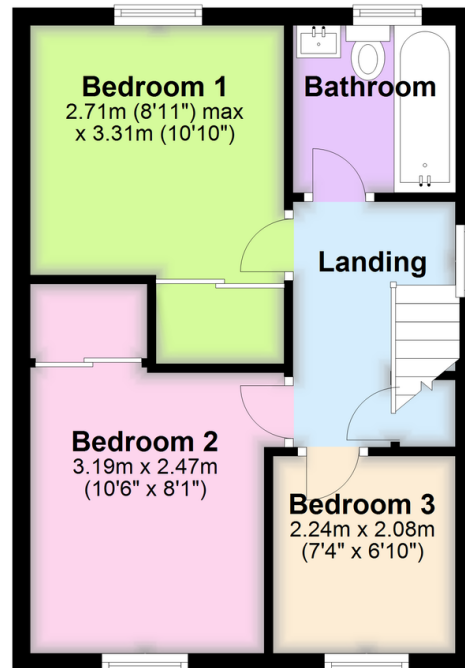
### Ground Floor

Approx. 34.7 sq. metres (373.1 sq. feet)



### First Floor

Approx. 34.5 sq. metres (371.4 sq. feet)



Total area: approx. 69.2 sq. metres (744.5 sq. feet)

01752 896020 | [info@millingtontunncliff.co.uk](mailto:info@millingtontunncliff.co.uk) | 19 Fore Street, Ivybridge, Devon, PL21 9AB